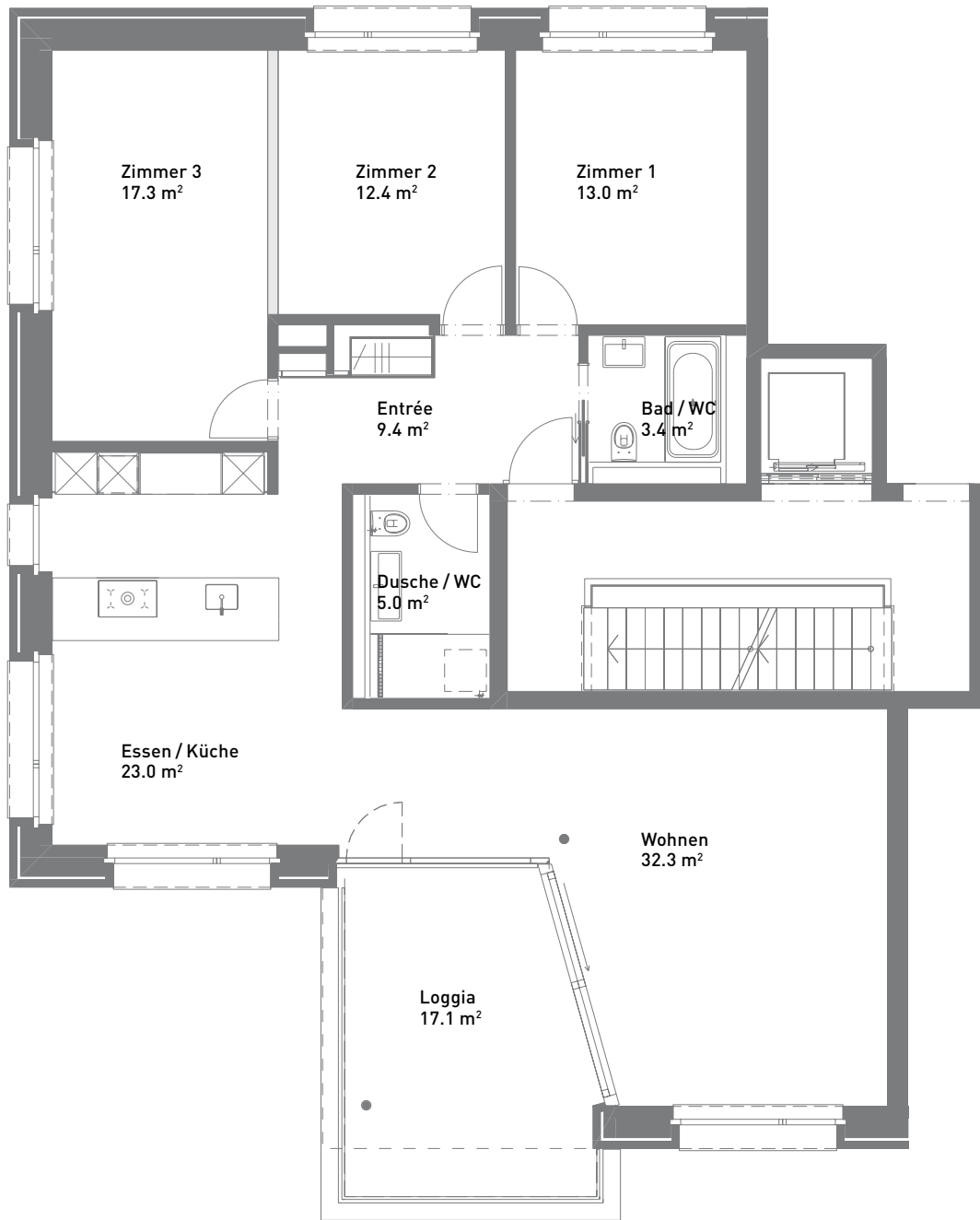
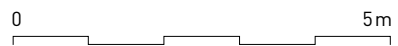


4 1/2-Zimmer-Wohnung, ca. 115 m²



Massstab 1:100, Format A4

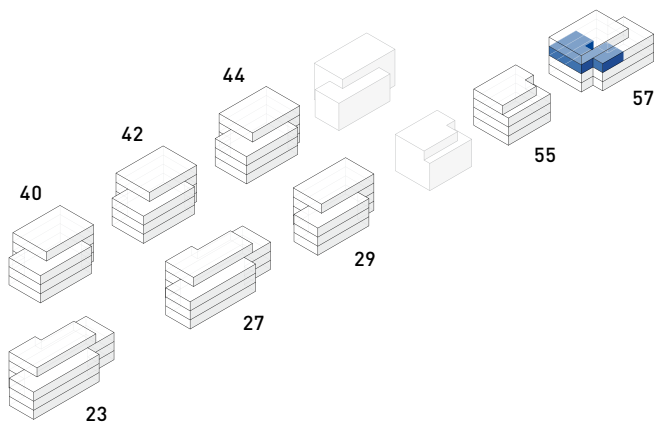
■ Nichttragende Wand



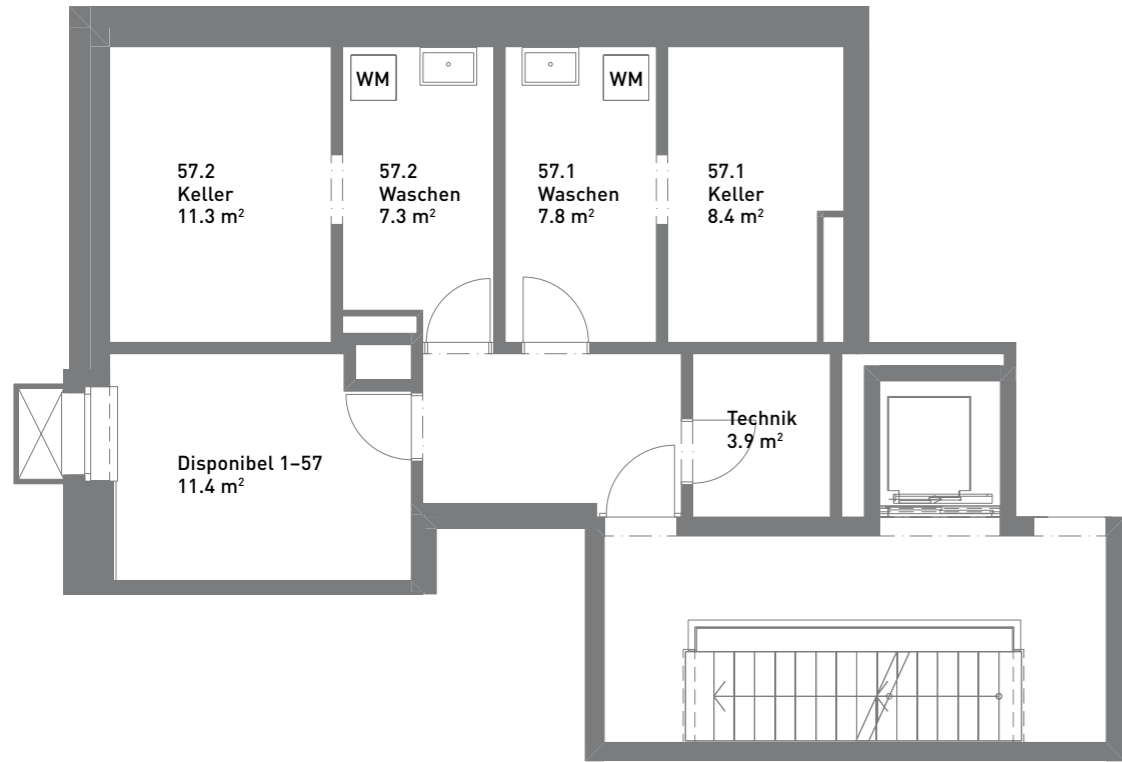
Florenstrasse 57

1. Obergeschoss

57.102



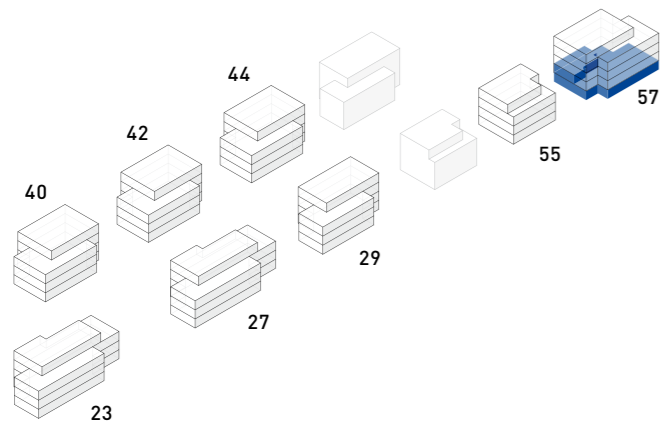
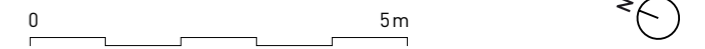
Kellerabteile und Waschen



Gartengeschoss

Kellergeschoss

Massstab 1:100, Format A3

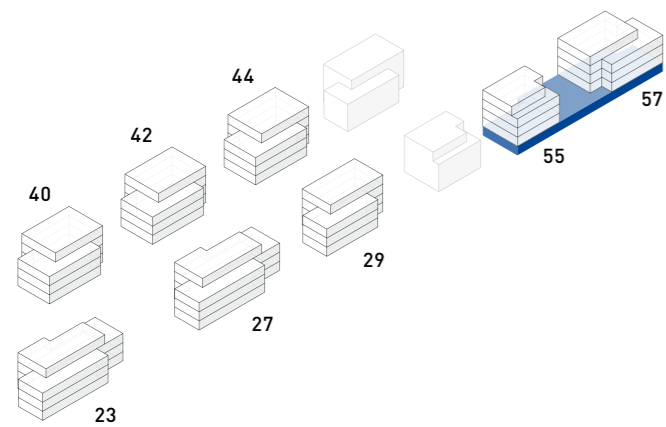


| Florenstrasse 57 | Gartengeschoss | 57.1 |
|------------------|----------------|--------|
| | | 57.2 |
| | Kellergeschoss | 57.101 |
| | | 57.102 |
| | | 57.201 |

Tiefgarage



13 Autoeinstellplätze und 1 Motorradeinstellplatz



Stockenerstrasse 55, 57